

WELCOME BOOKLET FOR STUDENTS

FALL 2021

#1





TÉLÉCOM PARIS

> Our school is part of **IMT** and founding member of **Institut Polytechnique de Paris**, a world-class science and technology institute uniting five French Grandes Écoles (elite institutions for higher learning): École polytechnique, ENSTA Paris, ENSAE Paris, Télécom Paris and Télécom SudParis. HEC is also a privileged partner of IP Paris. This internationally focused institution develops state-of-the-art scientific research, offers excellent training programs awarding all levels of degrees and guarantees excellent employment opportunities for its graduates.



TABLE OF CONTENTS

- 04 • PEDESTRIAN ACCESS**
- 05 • ACCESS BY BIKE, PUBLIC TRANSPORT, AND CAR**
- 06 • CAMPUS GUIDE**
- 08 • MAPS OF THE BUILDING**
- 11 • THE ÉCOLE POLYTECHNIQUE DISTRICT**
- 12 • PRACTICAL INFORMATION**
- 14 • DEAN OF STUDIES**
- 15 • ENGINEERING STUDENT AFFAIRS**
- 16 • MASTERS STUDENT AFFAIRS**
- 17 • POST-MASTER'S DEGREE STUDENT AFFAIRS**
- 19 • INTERNSHIP & PROFESSIONAL PROJECT SUPPORT**
- 20 • DEVELOPMENT & PARTNERSHIPS DEPARTMENT**
- 22 • INTERNATIONAL RELATIONS**
- 23 • RESSOURCES**
- 24 • CAMPUS LIFE**
- 25 • CABINET DEPARTMENT**
- 26 • STUDENTS' UNION - BDE**
- 27 • ALUMNI ORGANIZATION**
- 28 • STUDENTS' COMMON ROOM**
- 29 • CAMPUS DINING SERVICES**
- 30 • SHOPS & SERVICES**
- 32 • GETTING AROUND**
- 34 • SUSTAINABLE DEVELOPMENT**
- 35 • PATRONAGE**

Nicolas Glady President of Télécom Paris



Dear engineering students,

Télécom Paris is the #1 higher education institution for digital technology in France (2021 Figaro Ranking) and ranked #2 in overall engineering (2021 Etudiant Ranking). We train our engineers across the entire digital spectrum to provide them with the skills they need to innovate and undertake in a world where technology is omnipresent. Within our open-air laboratory, you will discover innovative pedagogy and a teamwork project approach that will allow you to quickly acquire highly advanced knowledge and experience in multiple fields.

Our world needs new skills to meet the major societal and environmental challenges of tomorrow. Artificial intelligence, big data, machine learning, the Internet of Things (IoT), cloud computing, quantum computing, 5G mobile networks, blockchain and cybersecurity, not to mention their applications to all industrial areas, are all scientific and technological fields in which we train our students. In an increasingly technological world, Télécom Paris offers you the opportunity to respond to these major challenges by becoming, as digital engineers, the architects of tomorrow's solutions.

Our school offers a multitude of opportunities. Télécom Paris' graduates enjoy exceptional employability in all sectors in France and internationally. The school's strong links with corporations and alumni will enable you to frequently interact with them during your studies and to explore the range of possible job opportunities. Your graduating class will include students from 40 countries and a portion of your training will take place abroad. Numerous pathways will be offered to you according to your interests while expanding your horizons.

You now have access to lecture halls, classrooms, and hands-on laboratories designed for excellence in training. Before or after classes, a rich and varied student life will allow you to fulfill your potential, notably, thanks to the dynamism of the associations on our brand new campus!

We are delighted to welcome you as an engineering student at Télécom Paris, an open-air laboratory for your future.

Nicolas Glady
President of Télécom Paris

PEDESTRIAN ACCESS

The school is located at 19 place Marguerite Perey in Palaiseau (91120)
GPS coordinates : 48.712793, 2.199441

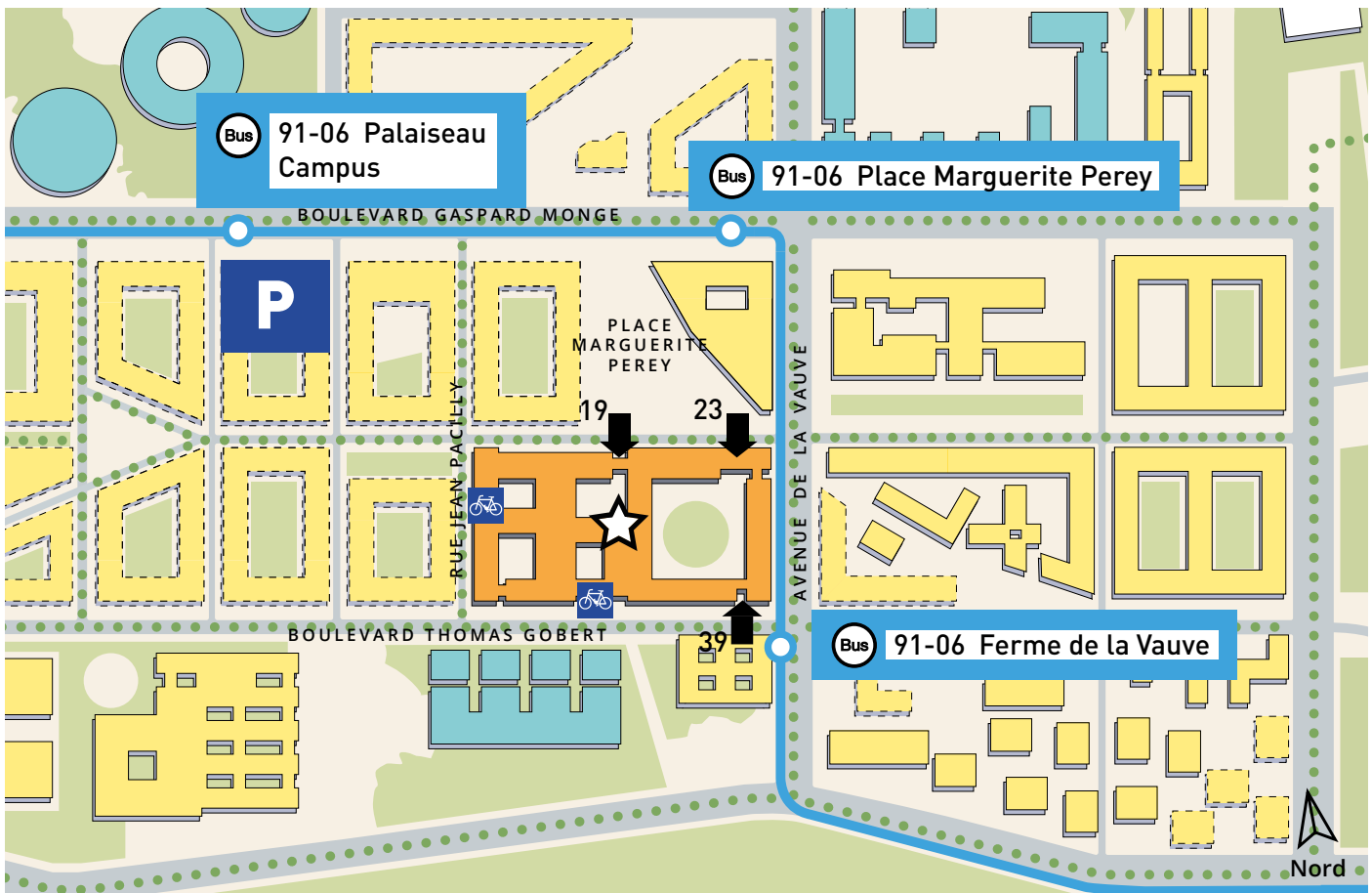
Opening hours of the main reception desk: 7:00am to 8:00pm, Monday to Friday
Télécom Paris Reception Desk: +33 1 75 31 92 01
Building security: +33 1 75 31 40 18
The reception desk is at the main entrance: 19 place Marguerite Perey.



★ The reception desk is opposite the main entrance, at 19 place Marguerite Perey.

Building access is also possible at:

- ➡ 23 place Marguerite Perey
- ➡ 39 boulevard Thomas Gobert



ACCESS

BY BIKE, PUBLIC TRANSPORT AND CAR



By bike

Bike paths (shown in green dotted lines on the map opposite) allow for safe travel on the Plateau de Saclay. They allow access to the Moulon District, but also to the surrounding towns: Palaiseau, Massy, Saclay, etc.

Moreover, a Zoov electric bicycle station is located at the base of our building. About twenty bicycles are available for use between the Camille Claudel district and the Quartier du Moulon (see more information on pages 32-33).

Two parking lots within the building (total capacity of 130 bikes) are accessible through the entrances located at:

- 33 boulevard Thomas Gobert
- 15 rue Jean Pacilly

By public transport

> From the Massy-Palaiseau station RER B and RER C (15 minutes) - Exit Gare routière Garnier

At the train station, go to the "Gare routière Garnier" exit and take the Albatrans Express 91.06 or 91.10 bus. Get off at **Ferme de la Vauve** or **Place Marguerite Perey**.

> From the Lozère RER B station (25 minutes)

Pedestrian route of about 300 steps, a distance of 1.5 km.

Take the stairs towards the École Polytechnique and walk to the building.

> From the Guichet RER B station (20 minutes)

Pedestrian itinerary of 1.5 km.

Take the Passage du Buisson and cross the Carrière de la Troche to reach the Plateau.

HOURS FOR BUS 91.06

The first bus leaves from the Massy-Palaiseau station at 6:00am.

Buses come about every 3 to 4 minutes during rush hour (6:56am – 10:00am and 4:00pm – 7:00pm).

The last bus travelling to the Massy-Palaiseau station leaves at 12:14am.

Outside of rush hour times, buses come about every 15 minutes.

By car

The underground parking garage is reserved for staff members.

We recommend the **Park'InSaclay** website and application to stay up to date about parking spaces that are near the school as well as their availability in real time.

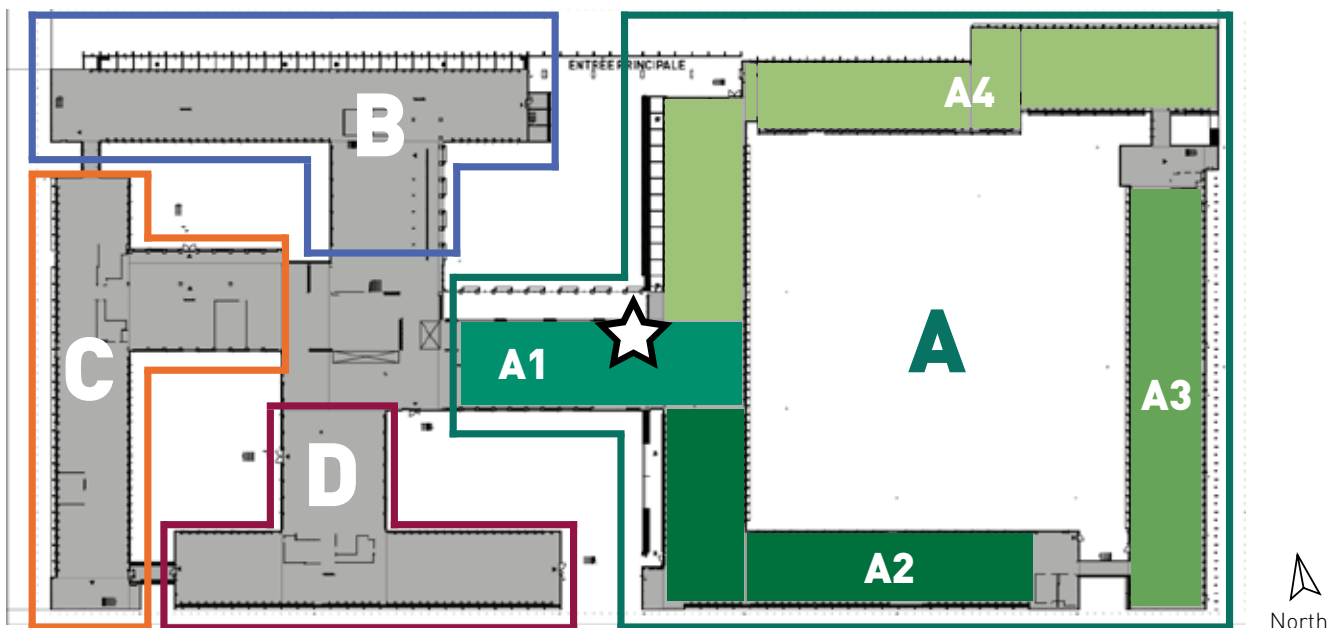


CAMPUS GUIDE

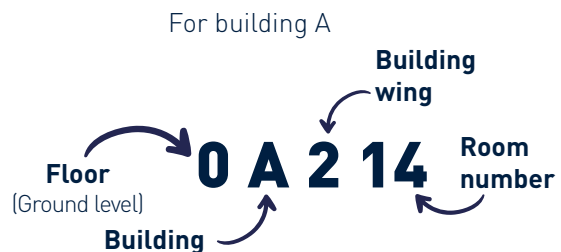


Inside the atrium, the main lobby branches out into the communal, teaching, and research areas. The property is composed of four buildings, A, B, C and D, is five storeys high and includes an underground basement level.

★ The main reception desk is located on the ground floor of Building A1, which leads into the atrium.



Office and room numbers are based on the following model:



Below is a list of the main services and their location in the building:

Direction	5A401, 5A405 and 2D14
Cabinet Director	2C49
Human Resources Department	5A407 to 5A420
Secretary-General	5A402, 5A404 and 5A406
Secretary-General - Building and Logistic Department	2A446 to 2A498
Secretary-General - Financial Department	2A329 to 2A344

**TÉLÉCOM
PARIS**

Teaching and Research Departments

Communications & Electronics Department COMELEC	3B, 3C and 3D
Communications & Electronics Department - COMELEC - Admin	3C22
Images, Data, Signal Department - IDS	5A101 to 5A109, 5B, 5C and 5D
Image, Data and Signal Department (IDS) - Laboratories	-1
Department of Computer Science and Networks - INFRES	4B, 4C and 4D
Department of Computer Science and Networks - INFRES - Labs	-1
Languages and Cultures Department	3A228 to 3A248
Economics & Social Sciences Department — SES	3A251 to 3A265, 3A3, 3A459 to 3A486
Teaching Department - Engineers, IP Paris Masters and Specialized Masters	2C19 to 2C24 ; 2C13 to 2C17 and 2C26 to 2C48
Research Department	3A433 to 3A437, 3A439, 3A445, 3A449, 3A451 to 3A454
Research and Pedagogy Showroom	0B03

Support Services

Social Diversity & Handicap Officer	2C56
Ecological Transition Officer	2C54
Communications Department	2C48 to 2C53
Development and Partnerships Department	3A438 to 3A443
Innovations Department	3A444 to 3A458
International Relations Department	2C55 to 2C65
IT Systems Department (DSI)	2A203 to 2A263, 2A306 to 2A326, 2A403 and 2A405
Student & Campus Life and Disability Office	2A482

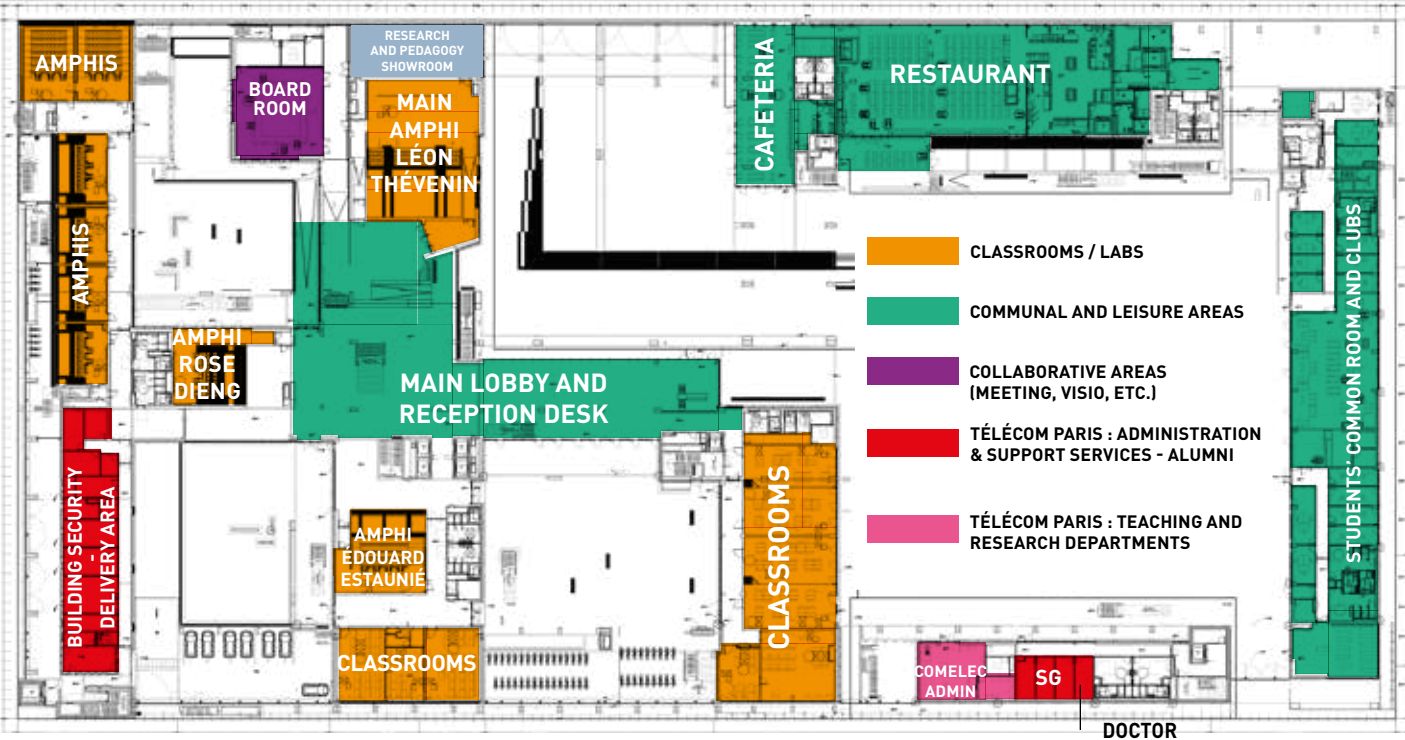
Télécom Paris alumni program	2A440
------------------------------	-------

Boardroom	0B05
Building Security	0C77
CRDN — Library	2A1, 2A2, 2A4
Doctor	0A258
Infirmery	0A258
Main reception	Ground floor
Multipurpose exercise studio	0A301
Social worker and welfare counselor	0A258
Student's Common Room	0A333
Studio Design	0B03
The e-Lab	2A237
The FabLab	2A237
"The WAN" Restaurant	0A4
"The Weeky" Cafeteria	0A4
"The Worko" Cafeteria	2A1

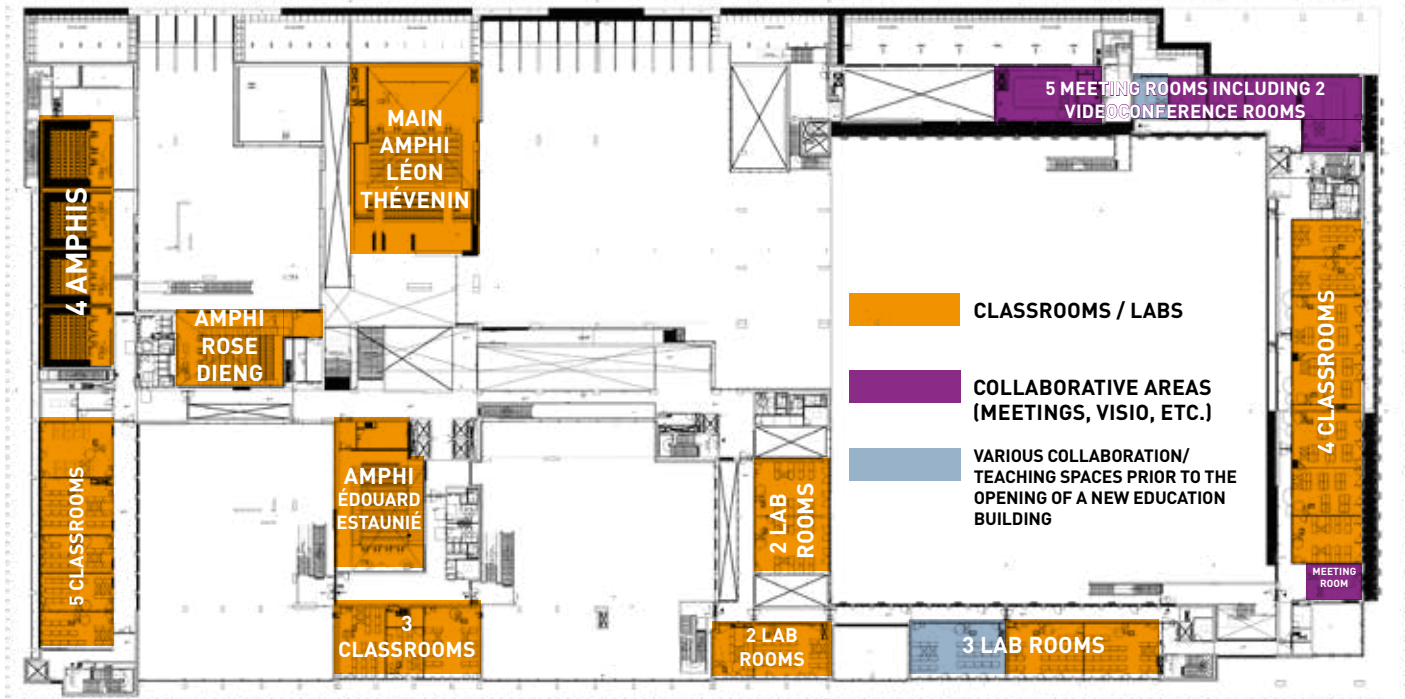
**COMMUNITY
AND
NETWORKING
AREAS**

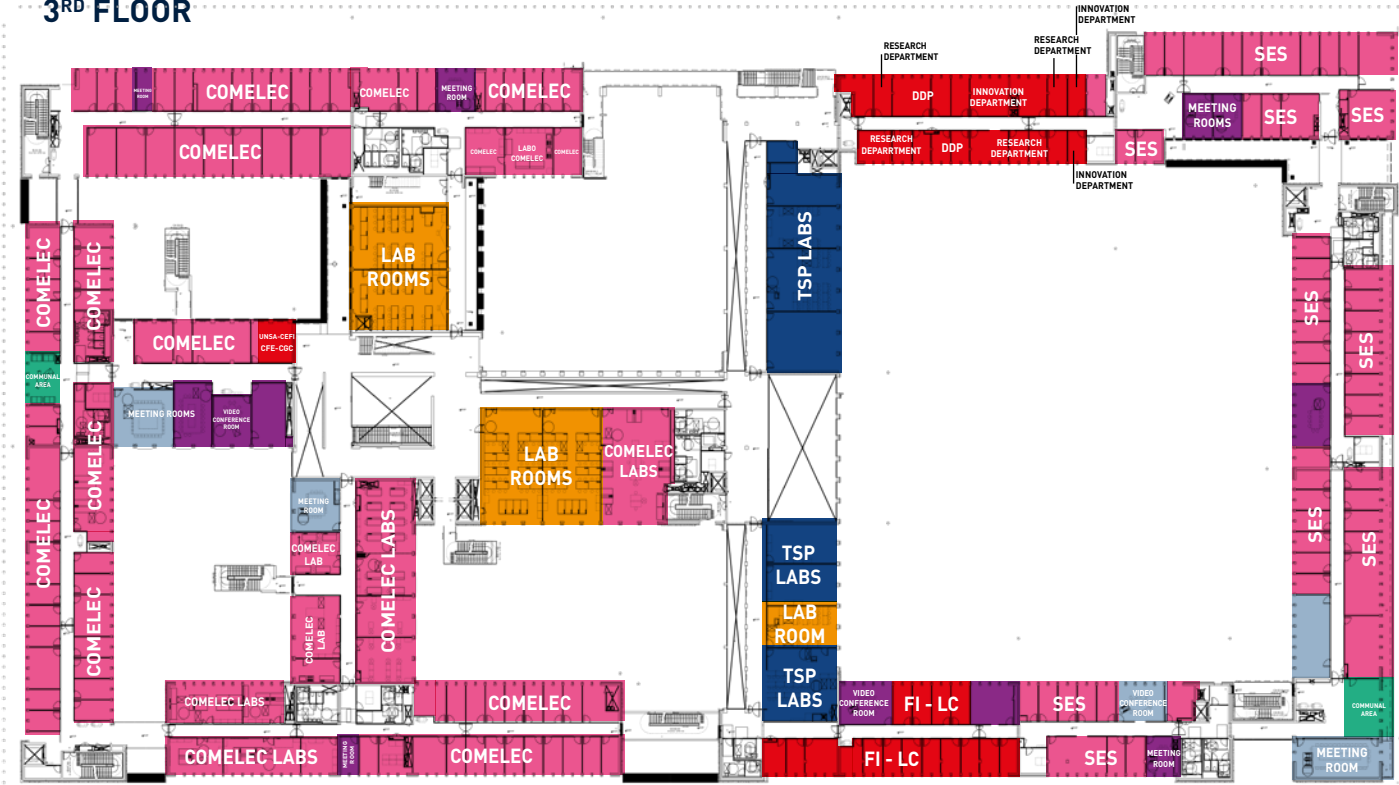
MAPS OF THE BUILDING

GROUND FLOOR



1ST FLOOR

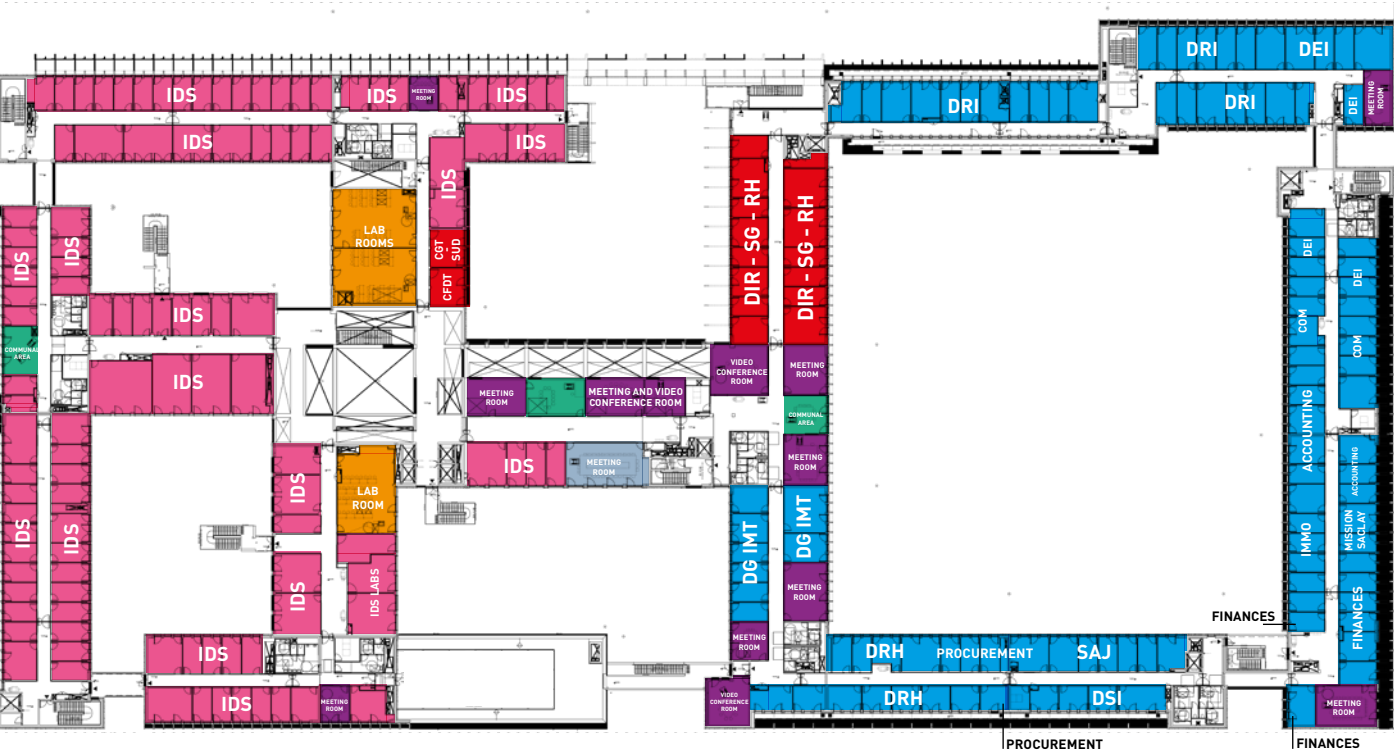




4TH FLOOR



5TH FLOOR



THE ÉCOLE POLYTECHNIQUE DISTRICT



PRACTICAL INFORMATION

Fees and Scholarships

Your tuition fees, scholarships, financial aid, and student life including your student card.

Engineering students / Masters 2



Frantz CAYOL

2C44 / Tel. : 01.75.31.93.73
frantz.cayol@telecom-paris.fr

Student Health Insurance

La Mutuelle des Étudiants (L.M.D.E.)

7 rue Danton
75006 Paris
Metro: Odéon station (lines 4 and 10)
From Monday to Friday - 8:30am to 5:30pm
Tel.: 0811 50 56 33

SMEREP

54 bd Saint Michel
75006 Paris
RER: Luxembourg station (Line B)
From Monday to Friday - 9am to 5:50pm
Tel.: 01 56 54 36 34

For additional assistance, please contact:



Graduate & Master students

For further assistance, please contact:

Ana BALAVOINE

Assistant in the International Relations Department

2C61 / Tel. : 01.75.31.94.72
ana.balavoine@telecom-paris.fr



Mastères Spécialisés®

For further assistance, please contact:

Iris LEFEBVRE

Assistant in the Dean of Studies department

2C28 / Tel. : 01.75.31.94.22
iris.lefebvre@telecom-paris.fr

Students services

The school's social worker is available to help you if you need assistance with:

- Bursary and financial issues
- Social issues
- Bureaucratic issues and paperwork
- Or anything else that's on your mind



Marie MATHERAT

Psychologist

0A258

psy.eleves@telecom-paris.fr



Consultations on Mondays, make an appointment by mail.

A school social worker and welfare counselor is available to all students.

The opening hours for appointments will be announced at the beginning of the school year.

Frantz Cayol can also inform students of the dates when the social worker is available.

Student support services

Remember! You're not alone! We highly recommend contacting Marie if you are having any personal, study-related, or campus life difficulties. Meetings are confidential.

Consultations are on Mondays; appointments can be made by sending an email. If you receive an automated message you can make a reservation following the instructions in that email.

Campus life

In Palaiseau, the staff remains dedicated to helping you on campus.



Sarah BENSAÏEM

In charge of campus and student life

2A482 / Tel. : 01.75.31.92.19

sarah.bensaïem@telecom-paris.fr

Housing in Palaiseau



The Paris-Saclay campus provides students with a wide variety of housing opportunities in the immediate vicinity of Télécom Paris.

More information on: www.telecom-paris.fr/logements



Florence LE GAC

Campus Division

Tel. : 01.75.31.43.83

florence.legac@telecom-paris.fr

Your contact for housing

DEAN OF STUDIES

The digital transformation is at work at all levels of society!

We want this transformation to be respectful of people and their environment.

IoT, virtual networks, the cloud, cybersecurity and artificial intelligence are digital disciplines that are at the heart of the scientific and technological responses to the industrial challenges and new uses of a connected society. But how can we create solutions that take into account the major issues of the energy transition and social responsibility?

Télécom Paris, France's #1 Grande École in digital technology, invites you to take an active role in this field, as an engineer, a decision-maker, as a researcher or a specialist capable of envisioning, designing and analyzing complex digital systems, as a scientist with in-depth training and imagination, and as a professional who is open and aware of the issues.

Welcome to our campus! Here you will develop your creativity, lay the groundwork for your scientific expertise, and refine your choices in an environment where students from more than 20 nationalities come together. So it's up to you to tap into your enthusiasm, your desire to learn and your openness to others to take full advantage of this exceptional and incredibly vibrant environment!

At the Dean of Studies, we are by your side to help you build a unique profile.

On behalf of the entire team, I wish you an excellent academic year with us!

Bertrand David

DIRECTION



Bertrand DAVID

Dean of Studies

2C36 / Tel. : 01.75.31.93.32

bertrand.david@telecom-paris.fr



Annie PEBAY

Executive Assistant

2C34 / Tel. : 01.75.31.93.39

annie.pebay@telecom-paris.fr



Sigolène MORIN

Head of Academics Affairs

2C41 / Tel. : 01.75.31.93.36

sigolene.morin@telecom-paris.fr



Iris LEFEBVRE

Assistant

2C28 / Tel. : 01.75.31.94.22

iris.lefebvre@telecom-paris.fr

SUPPORT



Sarah LEMARCHAND

Coordinator of the Pedagogy Department

2C13 / Tel. : 01.75.31.93.35

sarah.lemarchand@telecom-paris.fr



Marie-Hélène PIOVANO

Head of the Professional Project and Internship Department; Apprenticeship Officer

2C15 / Tel. : 01.75.31.93.77

marie-helene.piovano@telecom-paris.fr



Sinead NAMUR

Admissions Officer and social welfare

2C45 / Tel. : 01.75.31.93.61

sinead.namur@telecom-paris.fr



France LAMISCARRE

Training Administrative Manager

2B52 / Tel. : 01.75.31.96.15

france.lamiscarre@telecom-paris.fr

ENGINEERING STUDENT AFFAIRS



Émilie ADAM

Academic officer

2C47 / Tel. : 01.75.31.93.70
emilie.adam@telecom-paris.fr



1st-Year Students

For information regarding your course of studies, proof of registration, or course material, please contact the Academic Officer.



2nd & 3rd-Year Students

Each 2nd and 3rd year student has an academic advisor.

Please refer to him or her for any information.



Study Tracks: IMA, MACS, MITRO
ATHENS week.

Sylvia ALVES DE SOUSA

Academic officer

2C42 / Tel. : 01.75.31.93.71
sylvia.alvesdesousa@telecom-paris.fr



Study Tracks: MODS, SLR, SO. Option MIN
Interpersonal Training. École Polytechnique students

Magali LEBLOND

Academic Supervisor

2C45 / Tel. : 01.75.31.93.74
magali.leblond@telecom-paris.fr



Study Tracks: GIN, RIO, SR21
Theatre and Contemporary Humanities

Carole PELTIER

Academic Supervisor

2C46 / Tel. : 01.75.31.93.76
carole.peltier@telecom-paris.fr



Study Tracks: OptionsACCa, IGR, SE, TSIA,
TELECOM, Option IA, QEng
Auditors in exchange programs

Jérôme CAHORS

Academic Supervisor

2C43 / Tel. : 01.75.31.93.72
jerome.cahors@telecom-paris.fr

MASTERS STUDENT AFFAIRS

YOU ARE IN A MASTER'S DEGREE PROGRAM OF THE INSTITUT POLYTECHNIQUE DE PARIS

DESIGN, DATA AI, ICS, IGD, MICAS, MVA, SETI

For your registration, schedule, or school attendance certificate, you can contact your academic officer at the Dean of Studies department - Hallway 2C.

Masters from the Institut Polytechnique de Paris:
Design, Data AI, ICS, IGD, MICAS, MVA, SETI



Danielle DELOY

Studies Coordinator

2C38 / Tel. : 01.75.31.93.37

danielle.deloy@telecom-paris.fr



Myriam TURPIN

Coordinator of the IREN and Data Science
masters programs

3A345 / Tel. : 01.75.31.99.02

myriam.turpin@telecom-paris.fr

65 masters degrees are offered within the Institut Polytechnique de Paris, 7 of which are offered at Télécom Paris:

- > M2 Research in Design
- > M2 ICS Integration, Circuits & Systems
- > M2 MICAS Machine Learning, Communications and Security
- > M2 SETI Embedded Systems & Information processing
- > M1-M2 Data AI Data & Artificial Intelligence
- > M1-M2 IGD Interaction, Graphic & Design
- > M2 MVA Mathematics, Vision, Learning

POST-MASTER'S DEGREE STUDENT AFFAIRS

STUDENT AFFAIRS

Different assistants can help you depending on your Post-Master's Degree:

- > Your admissions
- > Certification, modification
- > Proof of registration
- > Internships



Christine DUGAS

MS : Network and Cyber Security
Architect / Régulation de l'Économie
Numérique / Systèmes Embarqués
2B50 / Tel. : 01.75.31.96.12
christine.dugas@telecom-paris.fr



Nassera EVRARD

MS : Big Data / Artificial Intelligence
2C19 / Tel. : 01.75.31.95.99
nassera.evrard@telecom-paris.fr



Catherine MARLIACY

MS : Enterprise Digital Architect /
Concepteur de Projet Digital
2B56 / Tel. : 01.75.31.96.19
catherine.marliacy@telecom-paris.fr



Sabine SEYNOU

MS : Management des Systèmes
d'Information en Réseaux / Smart Mobility
2C20 / Tel. : 01.75.31.96.16
sabine.seynou@telecom-paris.fr



Sabine TIMMERMANS

MS : Design, Network Architecture and
Cyber Security / Cybersecurity and Cyber
Defense
2B54 / Tel. : 01.75.31.96.11
sabine.timmermans@telecom-paris.fr



ACADEMIC OFFICERS

Network and Cyber Security Architect

Nathalie CERRE

nathalie.cerre@telecom-paris.fr

Tel. : 01.75.31.96.02

Enterprise Digital Architect

Noémie SIMONI

noemie.simoni@telecom-paris.fr

Tel. : 01.75.31.97.67

Mounira MSAHLI

mounira.msahli@telecom-paris.fr

Tel : 01 75 31 98 42

Big Data

Anne SABOURIN

anne.sabourin@telecom-paris.fr

Tél. : 01.75.31.97.20

James EAGAN

james.eagan@telecom-paris.fr

Tel. : 01.75.31.98.05

Design, Network Architecture and Cyber Security

Ahmed SERHROUCHNI

ahmed.serhrouchni@telecom-paris.fr

Tel. : 01.75.31.98.44

Cybersecurity and Cyberdefence

Rida KHATOUN

rida.khatoun@telecom-paris.fr

Tel. : 01.75.31.98.38

Artificial Intelligence

In partnership with ENSTA Paris

Chloé CLAVEL

chloe.clavel@telecom-paris.fr

Tel. : 01.75.31.97.04

Information Systems Management in the Digital Age

In partnership with ESSEC

Sylvie VIGNES

sylvie.vignes@telecom-paris.fr

Tel. : 01.75.31.97.72

Smart Mobility: Digital Transformation of Mobility Systems

In partnership with École des Ponts ParisTech

Véronique HACHÉ

veronique.hache@enpc.fr

Embedded Systems

Ulrich KUHNE

ulrich.kuhne@telecom-paris.fr

Tel. : 01.75.31.93.23

Digital Project Developer UX Skills Design

Jean-Claude MOISSINAC

jean-claude.moissinac@telecom-paris.fr

Tel. : 01.75.31.96.96

INTERNSHIP & PROFESSIONAL PROJECT SUPPORT



Your internship and professional project support

Engineering program
Masters Design, Data AI, ICS, IGD, MICAS,
MVA, SETI Masters



Marie-Hélène PIOVANO

Professional Project and Internship
Manager

2C15 / Tel. : 01.75.31.93.77

marie-helene.piovano@telecom-paris.fr

INTERNSHIP OPPORTUNITIES

Internships are mandatory during your studies. They are great opportunities for effective transfer of your newly acquired knowledge and softskills.

International students enrolled in a 24-month double degree program must apply for a 6-month paid internship in France.

For further information, please log into EOLE, your Télécom Paris intranet:

eole.telecom-paris.fr/formation/stages

Through your Télécom Paris Career Center on Jobteaser, you will access internship offers all year round from companies of all sizes, sectors and locations.



Stay on top of your applications

Design your CV and cover letters on CVDesignR, a Télécom Paris partner tool! You will have access to exclusive templates and benefit from Télécom Paris graduate proofreading assistance.given at the beginning of the 1st year).



DEVELOPMENT & PARTNERSHIPS DEPARTMENT

ORGANIZING EVENTS, CORPORATE PRESENTATIONS

AND MEETINGS WITH STUDENTS



Find all the news about Corporate Relations on social networks:



Meet companies throughout the year.

Find your internships.
Calendar of events on SynapseS
and registration on your Career
Center:

telecom-paristech.jobteaser.com



Sylvain LAMBLLOT

Corporate Partnerships & Development
Director

3A441 / Tel. : 01.75.31.93.97
sylvain.lamblot@telecom-paris.fr



Céline HERVIEU

Corporate Relations Manager

3A442 / Tel. : 01.75.31.93.96
celine.hervieu@telecom-paris.fr



Marco BOUBILLE

Corporate Partnerships Officer

3A438 / Tel. : 01.75.31.93.94
marco.boubille@telecom-paris.fr



Tony BERNO

Corporate Partnerships Officer

3A438 / Tel. : 01.75.31.93.92
tony.berno@telecom-paris.fr



**Job
opportunities**

**On the website of the Télécom Paris
alumni organization:**

www.telecom-paris.org

Career services:
bcar@telecom-paris.org

Contact:
relationsentreprises@telecom-paris.fr

Student entrepreneurship



Daniela PESCHARD

Management officer on innovation and student entrepreneurship

2C13 / Tel. : 01.75.31.93.31

D07 at 9 rue Dareau - 75014 Paris

peschard@telecom-paris.fr

Do you intend to set up a business? The incubator helps you to develop your project



The incubator, located in Paris, has been structuring and supporting innovative digital projects in France since 1999.

It is the leading French digital incubator in terms of the number of start-ups created, with more than 475 companies at the end of 2020.

More than €50M has been raised by the incubator's companies.

It specialises in supporting digital start-ups, particularly deeptech companies.

Contact the incubator to talk about your projects, and free mentoring will be offered before you officially launch.

<https://telecomparis-entrepreneurs.fr>

Contact: contact-incub@telecom-paris.fr



INTERNATIONAL RELATIONS

International Relations Department (DRI)



Jean-François NAVINER

Director of International Relations
Latin America
2C64 / Tél. : 01.75.31.94.24
jean-francois.naviner@telecom-paris.fr



Catherine VAZZA

Deputy Head of International Relations
Outgoing students Coordinator
Outgoing Mobility Manager
Europe, USA and Canada
2C60 / Tél. : 01.75.31.94.26
catherine.vazza@telecom-paris.fr



Christine GALLET

International Marketing and
Communication Manager
2C60 / Tél. : 01.75.31.99.58
christine.gallet@telecom-paris.fr



Claude ALLAFORT

Incoming students Coordinator
Russia and C.I.S.
2C55 / Tél. : 01.75.31.94.23
claud.allafort@telecom-paris.fr



Nicolas PROST

International projects Manager
Africa, Asia, Middle East and Oceania
2C58 / Tél. : 01.75.31.94.25
nicolas.prost@telecom-paris.fr



Jihan OMAR

Mobility Manager
Tél. : 01.75.31.92.05
jihan.omar@telecom-paris.fr



Ana BALAVOINE

DRI Assistant
Residence permit management
2C61 / Tél. : 01.75.31.94.22
ana.balavoine@telecom-paris.fr

STUDY ABROAD

A wide range of possibilities are offered,
including :

- > 40 double degrees in around twenty countries, including Brazil, Canada, China, Germany, Italy, Russia, Singapore, Spain, Sweden, USA, etc.
- > European Erasmus+ programmes
- > Master of Science, non-degree study periods

For more information, please contact the
International Relations Department.

Languages and Cultures Department (LC)



Maria-Teresa GUILBERT

Head of the Languages and Cultures
Department
3A230 / Tél. : 01.75.31.93.53
maria-teresa.guilbert@telecom-paris.fr

Estelle HENRI

Academic officer
3A228 / Tél. : 01.75.31.93.55
estelle.henri@telecom-paris.fr



RESOURCES

"CENTRE DE RESSOURCES DOCUMENTAIRES ET NUMÉRIQUES" (CRDN - LIBRARY)

BUILDING A, 2ND FLOOR

ONE PLACE, SEVERAL SPACES

1 BOOK AND RESOURCES ROOM,

1 WORK ROOM,

1 RELAXATION LOUNGE,

11 COLLABORATIVE WORKSPACES



Sophie CHOUAF

CRDN Head

2A203 / Tel. : 01.75.31.95.52

sophie.chouaf@telecom-paris.fr



Anne VIDAL

In charge of electronic resources

HAL Administrator and Thesis Correspondent

2A405 / Tel. : 01.75.31.95.54

anne.vidal@telecom-paris.fr



Valérie FRANÇOIS

In charge of the cultural fund and
communication

2A403 / Tel. : 01.75.31.95.51

valerie.francois@telecom-paris.fr



Betty RAYMONDIE

In charge of the scientific fund and PEB
(interlibrary loan)

2A403 / Tel. : 01.75.31.95.53

betty.raymondie@telecom-paris.fr



Margaux DUMONT

Administrative Manager

2A403 / Tel. : 01.75.31.95.48

margaux.dumont@telecom-paris.fr



The CRDN is open every day,
Monday to Friday from 9am to 10.30pm
Weekends from 12pm to 9pm

Tel : 01.75.31.95.50

bibliotheque@telecom-paris.fr

www.telecom-paris.fr/fr/campus/bibliotheque



Your digital environment at school



Zimbra

Email account and
scheduler.

<https://zimbra.imt.fr>



SynapseS

With SynapseS access your schedule,
your academic results, your academic
registration, etc.

SynapseS / Catalogue

Access to course information.



IT Services

Internal services offer an individual
account file repository, free access to
workstations, photocopying and printing
services and access to the Télécom Paris
network.

<https://eole.telecom-paris.fr/vos-services>

CAMPUS LIFE

REPRESENT STUDENTS WITHIN TÉLÉCOM PARIS COMMITTEES

Make your and your classmates' voices heard by becoming a representative in the school's various authorities.

Information on the EOLE website:
eole.telecom-paris.fr

★ Education committee

★ School Council

★ 1st year council

★ The board meeting of IMT

★ The board meeting of IP Paris

★ The jury of the studies

FOLLOW TÉLÉCOM PARIS ON SOCIAL NETWORKS



telecom-paris.fr



@TelecomParis



Télécom Paris



@telecom_paris



@TelecomParis



TelecomParis

COMMUNICATIONS DEPARTMENT



Sophie BURON

Head of Communications
Events and social media
2C53 / Tel. : 01.75.31.92.27
sophie.buron@telecom-paris.fr



Léa MICHAUT

Communications Officer
Events and social media
2C52 / Tel. : 01.75.31.95.25
lea.michaut@telecom-paris.fr



Nadia DEFRANCE

Communications Assistant
Preparatory Classes Fair and admitted-
students orientation weeks
2C51 / Tel. : 01.75.31.92.29
nadia.defrance@telecom-paris.fr



Stéphane BOUCART

Editorial Webmaster
Information posted on the Internet
2C48 / Tel. : 01.75.31.92.26
stephane.boucarter@telecom-paris.fr



Michel DESNOUES

Multimedia and DTP Graphic Designer
Photos and videos
2C50 / Tel. : 01.75.31.92.30
michel.desnoues@telecom-paris.fr

Represent your school

- > Become an ambassador for Télécom Paris by attending the recruitment Forums
- > Promotion of the school for applicants
- > Promotion of the school through Comète student organization

CABINET DEPARTMENT



The **Cabinet Director**, **Stéphane Potelle**, coordinates the school's cross-cutting strategic actions: ecological and energy transition, diversity, gender equality.

The Cabinet Department's officers and referees support students in their projects.



Dominique CÉLIER

Ecological Transition Officer

2C54 / Tel. : 01.75.31.92.28

dominique.celier@telecom-paris.fr



Jeanne PIGNOLY

**Ecological Transition and Diversity
Apprentice**

2C54 / Tél. : 01.75.31.94.50

jeanne.pignoly@telecom-paris.fr



Johanna LEGRU

Social Diversity & Handicap

2C56 / Tel. : 06.25.78.69.82

johanna.legru@telecom-paris.fr

**Taking action and
transforming schools to
protect the environment**

Stand up for diversity

- Gender equality
- Social inclusion and disability
- Inclusion and awareness
- Student engagement

Combating discrimination

The fight against harassment, discrimination and violence, including sexist and sexual violence, is one of Télécom Paris' top priorities.

Together, let's make our school a place of respect and openness!

A "listening unit" detects and fights against violence

3 discrimination officers: Sarah Bensalem, Aïda Jaïdane et Marianna Baziz.



Valérie BEAUDOUIN

Equality referent

**Teacher-researcher in Information and
Information and Communication Sciences**

Tel. : 01.75.31.99.04

valerie.beaudouin@telecom-paris.fr



Alain BONIOL

Equality referee

Director of the IT Systems Department (DSI)

Tel. : 06.60.97.21.81 / 01.75.31.94.50

alain.boniol@telecom-paris.fr

Disability Officer

accompagnement-handicap@telecom-paris.fr



Sarah BENSALEM

**Disability Officer / Campus and Student
Life Officer**

2A482 / Tél. : 01.75.31.92.19

sarah.bensalem@telecom-paris.fr

STUDENT'S UNION BDE



MORE THAN 40 CLUBS

AND ASSOCIATIONS



Passionate about sports, art and music

The Student Union offers numerous clubs to pursue all your passions and develop new talents

Your hobby isn't represented yet? Contact the Student Union to create a new club.

The Student Union



Welcomes new students and facilitates integration into the school's academic and social life.

Represents students at the school's management and administrative level.

Organizes and coordinates relations with companies and students through events and sponsorships.

Coordinates activities offered by the different clubs to ensure a rich, student life.

Organizes social events, trips abroad, sporting events, etc.

Contact: bde@telecom-paris.fr

Your community and campus
life advisor



Sarah Bensalem

Disability Officer / Campus and Student Life
Officer

2A482 / Tel. : 01.75.31.92.19

sarah.bensalem@telecom-paris.fr

MEET THE ALUMNI



GRADUATES ORGANIZATION



Isabelle DUBILLON

(Class of '83)

Managing Director

2A440 / Tel. : 01.75.31.42.59

isabelle.dubillon@telecom-paris.fr



Melina LAURICELLA

Communication Officer in charge of
students relations

2A440 / Tel. : 01.75.31.42.60

melina.lauricella@telecom-paris.fr



18 000+ GRADUATES

INTERNATIONAL

The alumni network supports your international project

Contact us on:

www.telecom-paris-alumni.fr/contact



From the first moment you enter the school, you will be involved in the alumni network, which is made up of former students of Télécom Paris.

More than 18,000 graduates in France and abroad are available to answer your questions and guide you in finding a job in France or abroad and even help you to choose your academic track at the school. They would be more than happy to share their experience with you.

By keeping your profile up-to-date on:
www.telecom-paris-alumni.fr,
activating your email for life (a sign of recognition between graduates and companies), you will remain informed of all the activities that the network offers.

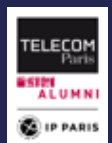
Welcome to Our network, Your network!



Laura PEYTAVIN

(Class of '90)

President of
Télécom Paris alumni



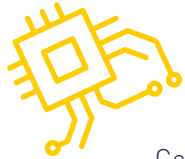
STUDENT'S COMMON ROOM

For the many Télécom Paris clubs and associations, the Common Room (Le Foyer) is a space where students can meet and exchange ideas.

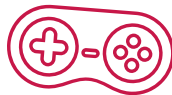
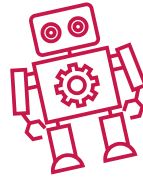
Located on the ground floor of Building A, it's here where students host various events including the popular "Rock Nights".

Come hang out between or after classes, play table football or pool, or unwind in the games library after a day of studying.

Below is a list of clubs and their office locations:



BDE - Students' Union	0A344 et 0A360
BDS - Sports Union (BDS)	0A322
Comète — an audiovisual and coommunications club	0A316 et 0A345
Forum — a corporate connections club	0A318
Junior Entreprise — JE	0A346 et 0A348
La Scène music studio	0A362
Rezel — an IT and computer science club	0A343
Télécom BariTech	0A323, 0A324 et 0A326
Télécom Étude	0A346 et 0A348
The Robotics Club	0A320
The LudoTech game room	0A311 et 0A315
Telecom Sound & Magic — TSM	0A347 et 0A349



CAMPUS DINING SERVICES

There are three dining facilities at your disposal.

“THE WAN” RESTAURANT

Collective dining services are provided by Elior.
The restaurant is entirely self-service and is located on the ground floor of the A4 building.
It serves up to 800 meals a day.
It has 280 seats, including seven for individuals with disabilities.
Its opening hours are from 11:30am to 1:45pm.

“THE WEEKY” CAFETERIA

Located on the ground floor, just next to the main restaurant, this dining facility seats up to 80 people and offers pastries, hot drinks, and snacks.
It's open every day from 8:00am to 4:00pm non-stop.

“THE WORKO” CAFETERIA

Located near the CRDN Library on the 2nd floor of Building A, this snack bar seats up to 12 people and is open from 8:00am to 6:00pm.

CROUS RESTAURANTS

Access to CROUS restaurants is possible after creating your account on www.izly.fr
The nearest restaurant is located in the Alexandre Manceau residence (3min walk from Télécom Paris).

IP PARIS DINING SERVICES

ÉCOLE POLYTECHNIQUE*

Le **MAGNAN** is an École polytechnique restaurant located about 15 minutes on foot from our building.
It is open from 11:30am to 2:00pm every day.

The **Safran** cafeteria in the main lobby also offers sandwiches, paninis, salads, coffee and other snacks.

To date, agreements are in development within the alliance of IP Paris. While they are being finalized, the meals purchased in these restaurants are at the “external rate”.

ENSTA PARIS*

The «**Cœur de blé**» cafeteria is open from 8:00am to 5:30pm Monday to Thursday, and until 5:00pm on Friday. You can have a quick-service breakfast or lunch including sandwiches, salads, pies, quiches, paninis, hot dishes, and desserts.

ENSAE PARIS*

Located about 10 minutes on foot from our building, ENSAE Paris has a cafeteria on the ground floor of the building.

& SHOPS SERVICES

DINING

École polytechnique District

Panifique

This bakery and artisanal pastry shop offers varieties of pastries as well as salads, wraps, burgers, and daily specials. Includes seating indoors or take away options.

Open Monday to Saturday from
7:00am to 8:00pm
13 avenue de la Vauve
91120 Palaiseau

Restaurant Universitaire CROUS

Open Monday to Friday
Restaurant: 11:30am to 2:00pm
and from 7:00pm – 9:00pm
Cafeteria: 8:00am to 6:00pm
Self-service open from 10:00am
to 2:30pm

22 cours Pierre Vasseur
91120 Palaiseau

American Corner

This restaurant offers a menu of bagels and hot dogs with a New York-inspired theme.

Cours Pierre Vasseur
91120 Palaiseau

SHOPS

Moulon District

P.U.I.O Cafeteria (CROUS)

Open Monday to Friday from
7:30am to 3:30pm
Rue Joliot Curie
91190 Gif-sur-Yvette
Bus 91.06, Université Paris-
Saclay stop

Lieu de vie Restaurant (CROUS)

Open Monday to Friday
Restaurant: 11:30am to 2:00pm
Cafeteria: 8:00am to 9:30pm
13 bis rue Joliot Curie
91190 Gif-sur-Yvette
Bus 91.06, Université Paris-
Saclay stop

SERVICES

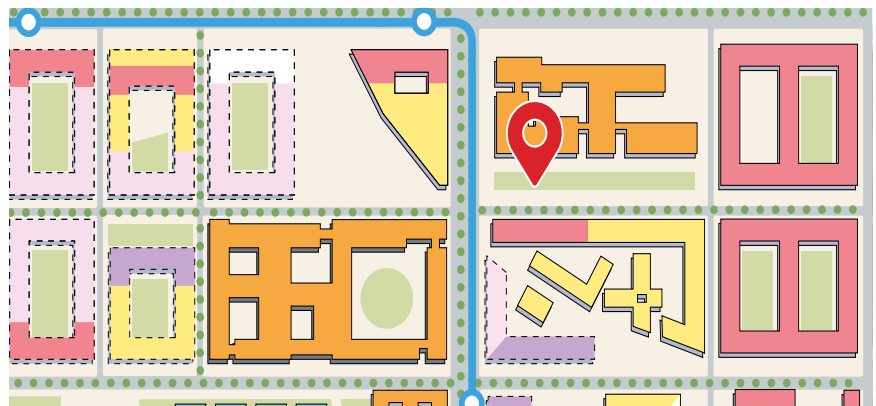
CentraleSupélec Eiffel Building (CROUS)

Open Monday to Friday
Restaurant: 11:30am to 2:00pm
Cafeteria: 8:00am to 5:00pm
2 rue Noetzlin
91190 Gif-sur-Yvette
Bus 91.06, Joliot Curie stop

Foodtrucks

Foodtrucks frequently alternate throughout the Plateau de Saclay campuses and offer various specialties.

You will find below the location of the closest foodtruck to the School.



DINING	SHOPS	SERVICES
<p>Tobacco and Magazine Shop Le Saclay</p> <p>This shop offers multiple services including stationery, daily newspapers and 1,000 magazine titles, tobacco, electronic cigarettes, FDJ and PMU games, candy, cards, gifts, hot coffee and cold drinks. Open Monday to Saturday from 7:00am to 9:00pm. Closed on Sundays. 8 boulevard Gaspard Monge 91120 Palaiseau</p> <hr/> <p>Franprix</p> <p>This supermarket offers all sorts of products needed on a daily basis. It's extremely close to the building and also has a dining area to eat purchased dishes.</p>	<p>Open Monday to Saturday from 7:30am to 9:00pm. Closed on Sundays. 15 avenue de la Vauve 91120 Palaiseau</p> <hr/> <p>Moulon District</p> <p>A pharmacy, bakery, tobacco shop, paper and press shop, and supermarket may soon open in the Moulon District, near the Serendicity Residence.</p> <p>Bus 91.06, Joliot Curie stop.</p>	<p>Camille Claudel District</p> <p>Carrefour City</p> <p>This supermarket is about ten minutes away by bus to Palaiseau and close to several student dorms.</p> <p>Open Monday to Saturday 7:00am to 9:00pm and on Sunday from 8:00am – 1:00pm. 2 route de Saclay 91120 Palaiseau Bus 91.06, Camille Claudel stop</p>
DINING	SHOPS	SERVICES

<p>BNP Paribas bank Paris Saclay branch</p> <p>The Paris Saclay branch is open for your banking and transaction needs or to meet with a financial advisor. A cash machine is also available.</p> <p>Open Monday to Friday from 10:00am to 6:00pm and until 7:00pm on Thursdays. 19 avenue de la Vauve 91120 Palaiseau</p>	<p>Moulon District</p> <p>A bank, doctor's office, optician, driving school, and hairdresser may soon open in the Moulon District, near the Serendicity Residence.</p> <p>Bus 91.06, Joliot Curie stop.</p>	<p>Camille Claudel District</p> <p>Pharmacie des Écoles - TRAN</p> <p>This pharmacy offers a wide range of pharmaceutical products as well as on-loan medical equipment. The pharmacists can also provide medical and homeopathic advice.</p> <p>Open Mondays from 2:30pm to 8:00pm and Tuesday to Friday from 9:00am to 12:30pm and from 2:30pm – 8:00pm. 2 place des Causeuses 91120 Palaiseau Bus 91.06, Camille Claudel stop</p>
--	---	---



GETTING AROUND

Bike paths

Seven kilometers of bike paths are available on the Plateau de Saclay.

They allow you to travel between the École Polytechnique district and the Moulon district, but also to reach other districts and surrounding towns such as the Camille Claudel district in Palaiseau, the Corbeville district, Massy, Saclay, Gif-sur-Yvette, etc.



bus 91.06

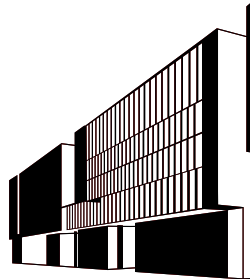
The *Transessonne* 91.06 bus line operates among the sites of ENSAE Paris, ENSTA Paris, and Polytechnique schools and provides access to Massy-Palaiseau RER B and C and the TGV station.

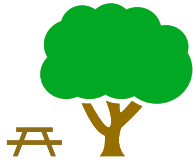
Buses arrive every 3 to 4 minutes during peak hours and every 10 to 15 minutes during off-peak hours.



Commuting Time:

- To get to **ENSTA Paris**:
- To get to **ENSAE Paris**:
- To get to the **Moulon District**:





Shared electric bikes

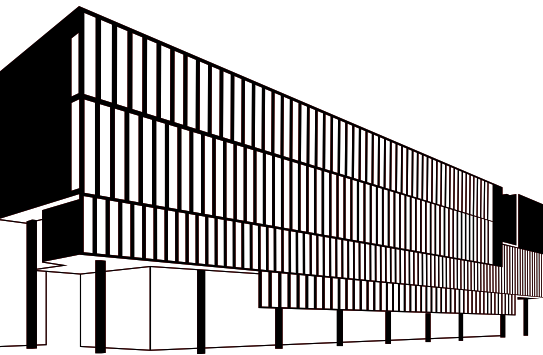


Zoov is an electrically assisted bicycle service currently deployed on the Plateau de Saclay.

A total of 2,000 bikes are present on the Plateau de Saclay.

The bikes are free floating and a hundred or so charging stations have been installed.

This service costs the user €2 to unlock the bike and use it for 20 minutes.



20 minutes on foot / 5 minutes by bus / 7 minutes by bike
10 minutes on foot / 3 minutes by bike
about 6 minutes by bus / 15 minutes
by bike



On foot

All around the school, many areas are now available, or in progress, to promote walking and pedestrian traffic.

A fitness path is currently in development to connect all the schools within the Institut Polytechnique de Paris.



SUSTAINABLE DEVELOPMENT



An HQE building

Our new building has been designed for High Quality Environmental (HQE) classification. HQE is a voluntary approach to managing the impact on the environment generated by a building while providing its occupants with healthy and comfortable conditions throughout the life of the structure.

The heating network

Our campus benefits from a heating network based on deep geothermal energy. The buildings are supplied with 60% renewable energy from the Albien geothermal aquifer at a depth of 700 metres. This solution emits three times less CO2 emissions than a traditional system and, on such a large scale, is a worldwide first. Our Paris-Saclay urban campus was recently awarded the Positive Energy Territory for Green Growth (Territoire à énergie positive pour la croissance verte) label and is a truly remarkable technological showcase.



Recycling and waste management

Our campus sorts its waste and separates paper and cardboard, "computer waste" (D3E), ordinary industrial waste, liquids and hazardous materials.

The collection and recycling or elimination is carried out with respect for and protection of the environment. To do this, the school has chosen an ethical and supportive company that collects batteries, paper and D3E cartridges, while creating local and sustainable jobs for people with disabilities. Finally, the school is experimenting with the co-creation of a compost for vegetable waste with the students.

Calling all volunteers!

A responsible digital school

The school has systematized digitalization, a document sharing server, centralized printing and recycled paper and is committed to eliminating plastic. But above all, the school offers you a whole range of tools for distance learning, videoconferencing and digital spaces to optimize your work-travel needs and enrich your learning.



Committed to a sustainable meal service

Our self-service restaurants and cafeterias are committed to diversifying daily meals, in particular by integrating a quality vegetarian offering and also to making progress in terms of local and organic sourcing of ingredients, reducing food waste, sorting and recovery of bio-waste, and the use of 100% biodegradable cleaning products.

Sustainable commuting

The public transport network on the plateau and towards the main stations is constantly being improved. The use of low-impact mobility options on the environment is facilitated by electric bicycle terminals by subscription, at the foot of the building, and in the surrounding area or at neighboring stations. And through the possibility of recharging electric vehicles in our parking garage and in the vicinity.



PATRONAGE

Endowed Spaces

You will notice that some spaces, or seats in the main Thevenin amphitheater, are named after certain individuals. These are the names of those who have generously offered a donation to the school. Patronage, or endowment, is the act of showing appreciation for a financial donor (e.g. an individual, company, group of people, etc.) by **placing their name on a space or piece of equipment**. Endowment can be for a limited period of time or for life. In our building, we have offered patrons the choice to name a space for ten years or for life, depending on the amount given. The patron's name is written on a plaque at the entrance of the space or on the seat chosen by the donor. Donors are mainly alumni but also parents of students. It's a special way for them to show their appreciation for the school.

The act of honoring donors on campus property was first introduced in the United States in cultural and higher education institutions. In France, this practice is still quite recent and is mainly seen in stadiums and cultural spaces. Other leading engineering schools, such as Polytechnique and CentraleSupélec, have launched major patronage campaigns to cultivate their resources and foster the improvement of their schools. In this context, Télécom Paris has launched its own support and development campaign.

The funds raised through this patronage campaign are used to finance the school's four main pillars: social diversity - international initiatives - entrepreneurship - scientific excellence and innovation. Thanks to these donations, students receive scholarships for academic achievement, others can expand their academic horizons, talented professors are recruited, and equipment is financed. This is an exceptional opportunity for the school to prosper in the new ecosystem of the Institut Polytechnique de Paris.

Since 2014, this initiative has raised €900,000.



Percent for Art

The term Percent for Art refers to a program where a percentage of the cost of large-scale development projects is dedicated to fund and install public art.

For our new building, the work of the visual artist Evariste Richer and his team was selected. **INFRAWIND & METACLOUD** is a dual-discourse work. The artist, born in 1969 in Montpellier, describes the creation as "Poetry" which exalts the architects' undertaking and the "Meteorological" map of the community spaces of the building.

In his own words, **The INFRAWIND & METACLOUD weather map, inspired by cloud patterns, the compass rose, and the interlocking filaments of feathers, or barbules, is spread throughout the entire site. Through this work, I have composed a new framework of architecture, revealing a changing climatic landscape intertwined with engineering and science.**

Evariste Richer associates each floor with a shade of blue, giving way to isolated clouds on large enameled plates in the main lobby and wind roses to indicate the directions to the different spaces.

The furnishings, in a seventh shade of blue, complete the system. Tables, benches and stools, in the interlocking barbules, symbolize the breeze and accompany the movements of staff and students within the building.

Practical Information

Main location

Télécom Paris
19, place Marguerite Perey
F-91120 Palaiseau
Tel: 01 75 31 92 01

Access (with student ID) from
7:00am to 8:00pm from Monday to
Friday.

Others sites

Incubator

9 rue Dareau, 75014 Paris
Tel: 01.45.81.71.34
RER: line B - Denfert-Rochereau station
Metro: line 6 - Saint-Jacques station
Bus: lines 57, 67 and 83 - La Tombe Issoire stop

SME Builder

23 avenue d'Italie, 75013 Paris
Metro: lines 5, 6 and 7 - Place d'Italie station
Bus: lines 57, 67 and 83 - Place d'Italie station



CONTACTS

admissions@telecom-paris.fr